

HD Smart Life Camera

User Manual



APP Installation

IOS: Search for 'video0' in the App Store to download and install.

Android phones: search for 'video0' in the Android application market to download and install.

Or scan the QR code below to install:



Android



IOS



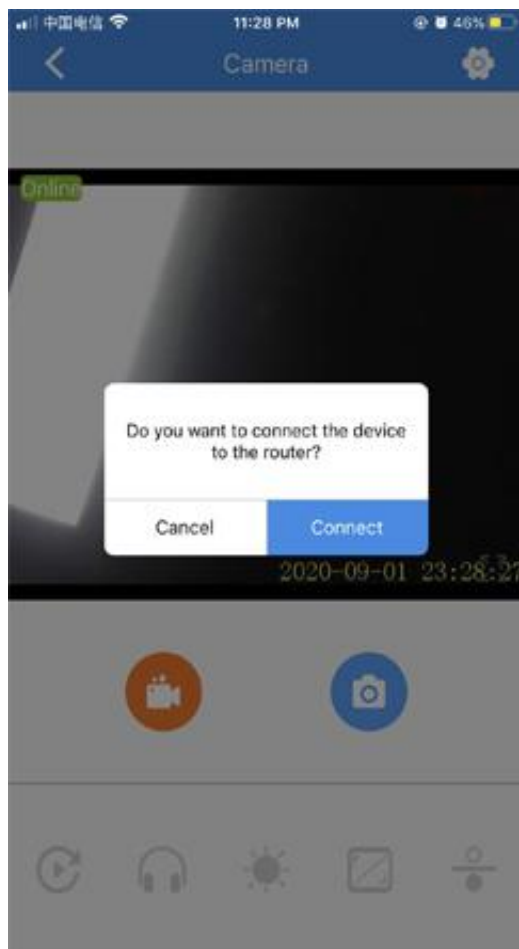
Google play

Steps for usage

1. Turn on: Press the ON/OFF button for 2 seconds to turn on, the red and blue lights are on at the same time, and wait for the blue light to flash slowly (the blue light is always on when there is no TF card).
- 2 Shut down: Press the ON/OFF button for 4 seconds and the red and blue lights will flash and then the lights will go out , and the device will shut down.
- 3 Connection mode switching: short press the MODE button in remote mode, the camera will switch to point-to-point mode.
4. Connect the MODE button twice to restore the original password (hk123456).

AP hotspot networking settings

1. Turn on the camera, the red and blue lights flash at the same time, wait for the blue light to flash slowly, and the device hot spot is start successfully. (The blue light is on when there is no card)
2. Enter the phone WIFI setting interface and connect to the hotspot of the machine (starting with Video0).
3. Open the "Video0" software and directly output the picture.



Click "Cancle"

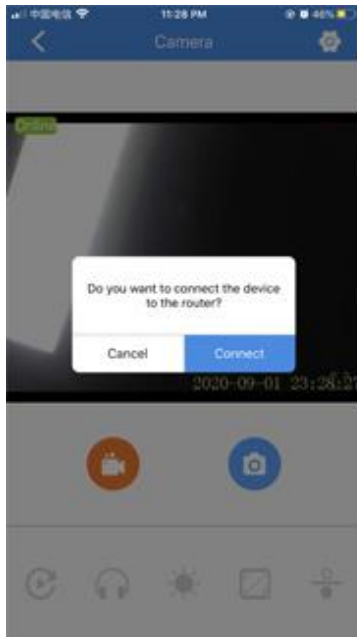
Enter AP mode to view

WiFi mode networking settings

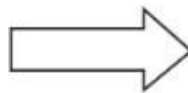
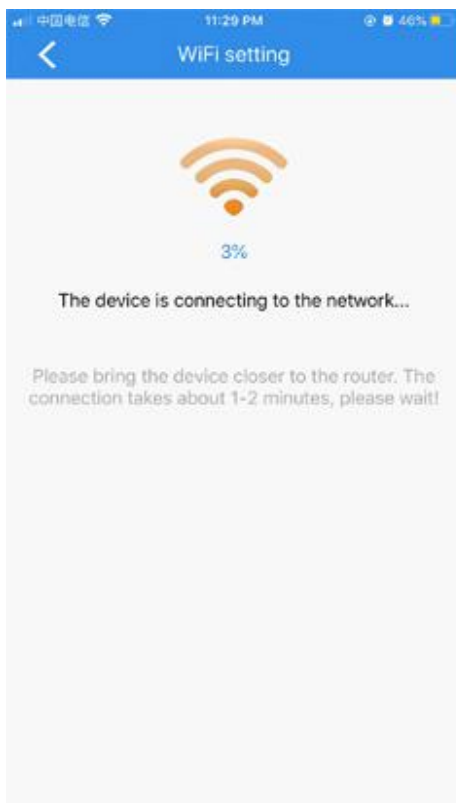
Select "Connect", select the name of the WiFi that needs to be connected, enter the WiFi password and click "Connect", the camera enters the remote network mode to watch, the red light flashes (the red light is always on when there is no TF card).

Note:

When the camera is connected to WiFi for the first time, please keep close to the router and mobile phone.



Click "connect"



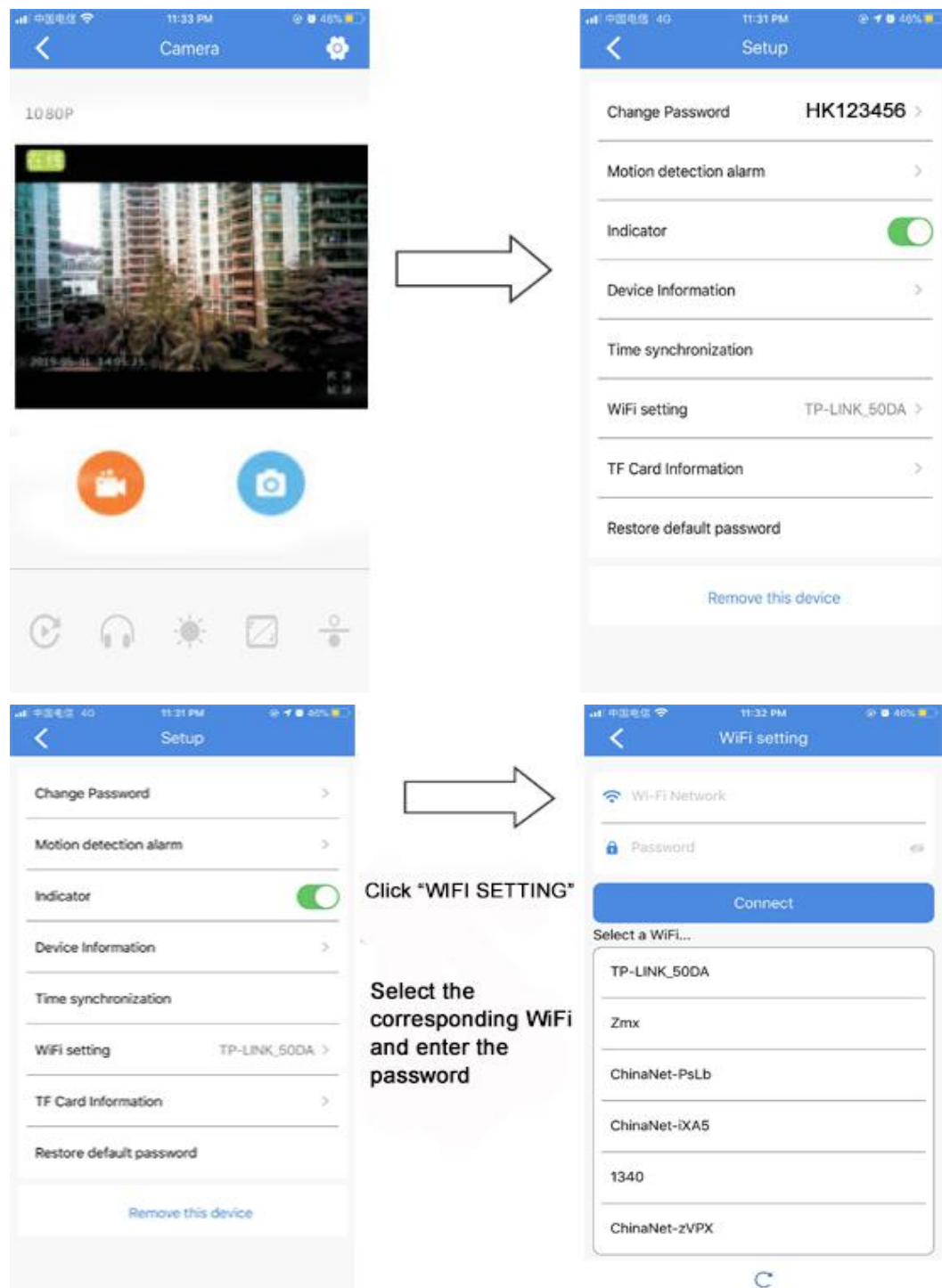
Wait for 30 seconds

AP hotspot to WIFI mode setting

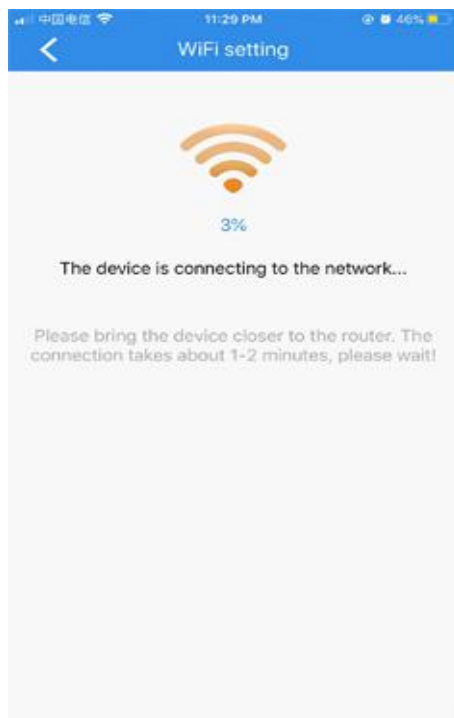
After entering the hotspot viewing mode, click the setting icon in the upper right corner of the screen, enter the "settings page", select "WIFI networking settings", select the WIFI name to be connected, enter the password and click "connect", the camera enters the remote network mode to watch, the red light flashes (The red light is always on when there is no TF card).

prompt:

When the camera is connected to WIFI for the first time, please keep close to the router and mobile phone.

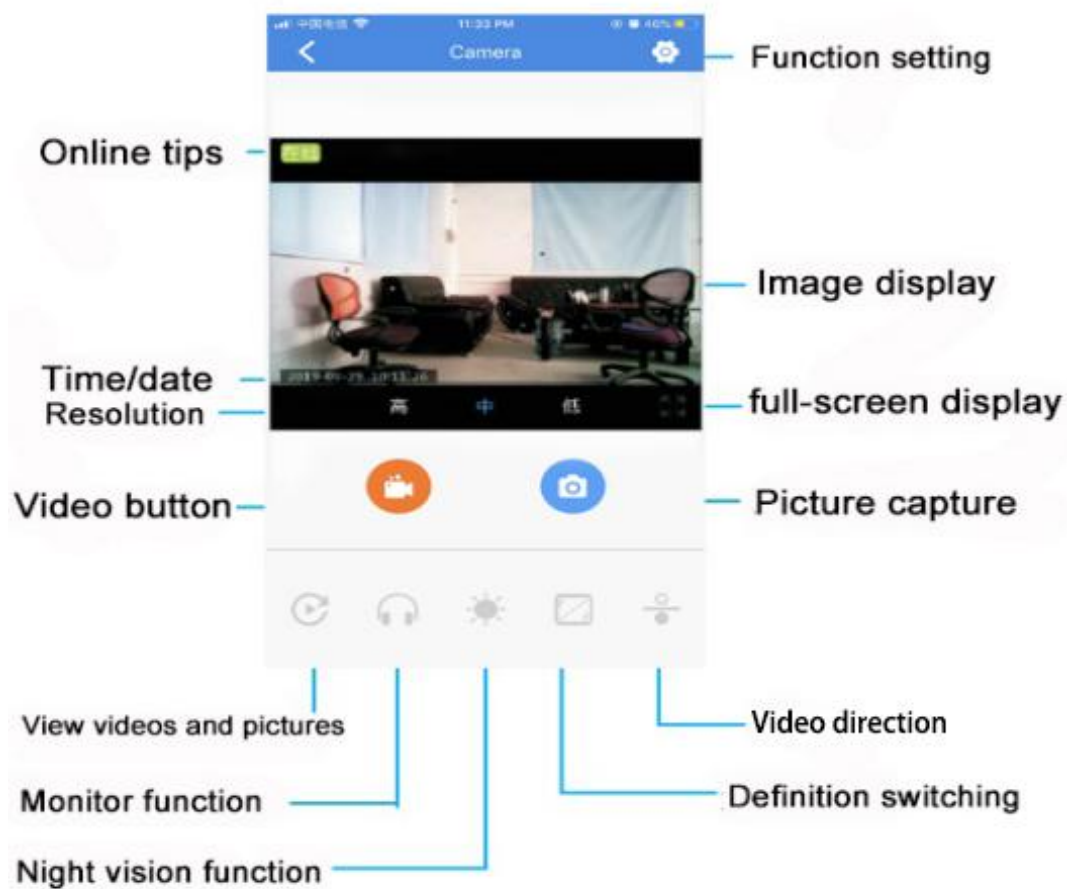


After 30 seconds, the camera will connect to the router.



Wait for 30 seconds

Interface buttons



Some problems and solutions:

1. Long press the power button and the red and blue lights do not turn on. The device may be left for too long and the battery may run out.

Please charge the device.

important hint

1. When using this product for the first time, please fully charge the product.
2. Please choose a charger from a regular manufacturer to charge this product.
3. Please use this product within the specified temperature.
4. Do not drop, throw this product.
5. Please turn off the power before cleaning the product.
6. Do not disassemble the product by yourself.

Seriously declare:

Please strictly abide by relevant national laws and regulations, and do not use this product for any illegal purposes.